
PCP Post

Alabama Coordinated Health Network news, topics, and updates.



IN THIS ISSUE

NACC Referrals

Help us help you!

Project ECHO Depression

A collaborative approach to bringing mental health care to the front lines.

Medical Management Meetings

Have you met your participation requirement?

NACC Referrals

We can help! Our Care Coordination services are available to help your patients get healthy and stay healthy. Our referral forms are located on our website.

We need your help! Please send us referrals for any Medicaid recipients with a diagnosis of substance use disorder. We can connect them with the resources and support they need.

Medical Management Meetings

There are three (3) Medical Management Meetings left in the year to meet the (3) meeting requirement. A provider (MD, DO, PA, or NP) must attend three (3) meetings each year to meet the participation requirement.

Zoom links and participation requirements are available on our website: www.northalcc.org/mmm-schedule

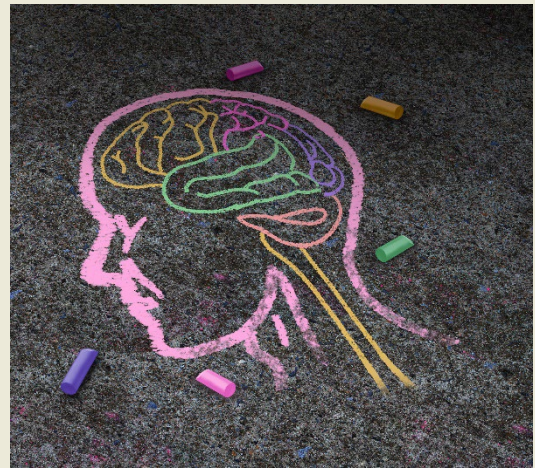
July 6th at 6pm
July 13th at 12pm
July 13th at 6pm

PROJECT ECHO

DEPRESSION

Project ECHO (Extension for Community Healthcare Outcomes) is an outreach and educational program designed to address healthcare disparities in under-served and remote areas. First developed at the University of New Mexico, ECHO has revolutionized collaborative medical education across the globe by using a regional hub-and-spoke model for the purpose of knowledge-sharing among clinicians and healthcare professionals.

The UAB Depression and Suicide Center in partnership with the Department of Family and Community Medicine and the Department of Psychiatry and Behavioral Neurobiology hosts a collaborative and engaging monthly ECHO clinic. They are a team of experts that provide education and case discussion for primary care clinicians across the state on the diagnosis and treatment of depression. The goal of these ECHO clinics will be to increase the number of patients with depression who can be treated successfully in their primary care physician's office by providing Alabama physicians with didactic instruction and live, de-identified and HIPAA-compliant case discussion.



Providers are encouraged to submit depression and/or related mental health cases for discussion.

Visit the UAB Project ECHO Depression page for complete information and to register:

www.uab.edu/medicine/psychiatry/research/programs/depression-suicide/echo-depression

Source: University of Alabama Birmingham, Project ECHO Depression

Want to join our email list?

We send out important alerts and announcements. Visit our website and select "Medical Management Meetings" and fill out the form to join.

Has your information changed?

To be sure that we have the most up-to-date information, please let us know if your contact information or provider roster has changed.

Have questions?

If you are a provider and have questions, contact Amelia Hreha, Quality Manager.

Phone: (615) 785-3323
Amelia.Hreha@NorthALCC.org

North Alabama
CommunityCare

PO Box 18926 • Huntsville, AL 35804
Tel: (256) 382-2590 • Fax: (256) 382-2715
www.NorthALCC.org